

SONATE

Pour

Piano et Guitare

Composée

PAR

LÉONARD DE CALL

Œuv. 143.

Propriété de l'Editeur.

Prix 4^f. 50^c.

A PARIS

Chez RICHULT, Editeur de Musique, Boulevard Poissonnière N° 16 au 1^{er}

8. R.

N° On trouve chez le S^r Richault, la Collection des Œuvres de L. de Call.



Simon Richault

GUITARRE.

SONATE.

Andante.

11

16

22

25

31

38

42

46

53

58

f *p* *f* *f* *f* *p* *f* *p* *f* *f*

2 1 2

4

8.R.

GUITARRE.

64

70

75

79

Cantabile.

MENUTTO.

82

90

97

103

106

TRIO.

110

GUITARRE.

121

128

132

pp

D.C.M.

140

ANDANTINO: $\frac{6}{8}$

7

2

2

157

p

163

168

F

177

F

7

187

2

2

F

198

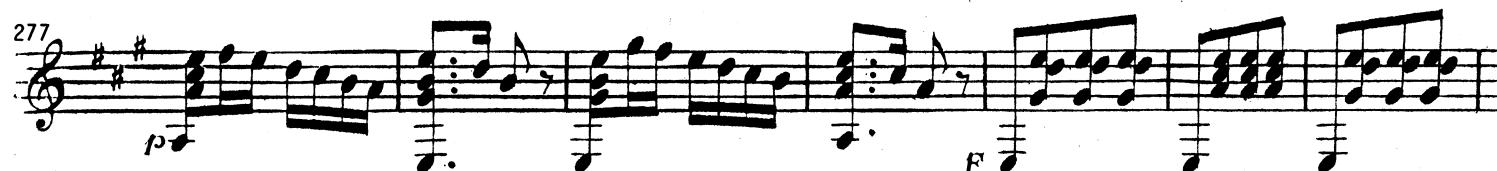
p

GUITARRE.



Andante.

RONDO.



GUITARRE.

[illegible]

SONATE

Pour

Piano et Guitare

Composée

PAR

LÉONARD DE CALL

Œuv. 143.

Propriété de l'Editeur.

Prix 4^f. 50^c.

A PARIS

Chez RICHULT, Editeur de Musique, Boulevard Poissonnière N^o 16 au 1^{er}

S. R.

N^o On trouve chez le S^r Richault, la Collection des Œuvres de L. de Call.



Simon Richault

Andante.

SONATE.

F

5

p *FP* *p* *F*

10

p *F*

15

p *F*

20

p *F*

25

f

30

pp

f

36

tr

43

f

pp

50

f

56

62

66

71

76

Cantabile.

82

MENUETTO.

87

8.R.

W0019

105

105

TRIO.

110

pp

pp

tr

[illegible]

126

Handwritten musical score for piano, measures 126-131. The key signature is D major (two sharps). The music features a complex, rhythmic melody in the right hand and a dense, chordal accompaniment in the left hand. The left hand uses a lot of sixteenth and thirty-second notes, creating a textured, tremolo-like effect. The right hand has more melodic lines with some grace notes. The piece ends with a final chord in the left hand and a whole note in the right hand.

ANDANTINO.

140 *p*

144 *pp* *p*

150

156 *f* *p*

161

166 *f* *pp*

Detailed description: This is a piano score for a piece in G major (one sharp) and 6/8 time. The tempo is marked 'ANDANTINO'. The score consists of six systems of two staves each. Measure numbers 140, 144, 150, 156, 161, and 166 are placed at the beginning of their respective systems. Dynamics include piano (*p*), pianissimo (*pp*), and forte (*f*). The music features a variety of textures, including arpeggiated figures, block chords, and melodic lines with grace notes. A repeat sign with first and second endings is present at the end of the system starting at measure 166.

173

173 174 175 176 177 178 179

180

180 181 182 183 184

185

185 186 187 188 189 190

191

191 192 193 194 195 196 197

198

198 199 200 201 202 203 204

205

205 206 207 208 209 210 211

RONDO.

212 Andante.

Musical score for Rondo, measures 212-246. The score is written for piano (p) and features a variety of musical elements including trills (tr), slurs, and dynamic markings (p, f). The tempo is marked Andante. The key signature is one sharp (F#). The time signature is 2/4. The score is divided into six systems, each with a measure number at the beginning. The first system (measures 212-219) shows a trill in the right hand and a series of chords in the left hand. The second system (measures 220-226) features a trill in the right hand and a series of chords in the left hand. The third system (measures 227-232) shows a trill in the right hand and a series of chords in the left hand. The fourth system (measures 233-240) features a trill in the right hand and a series of chords in the left hand. The fifth system (measures 241-245) shows a trill in the right hand and a series of chords in the left hand. The sixth system (measures 246-249) features a trill in the right hand and a series of chords in the left hand.

252

System 252-256: Treble and bass staves. Treble staff has a trill (tr) above measure 255. Dynamics: *f* in measures 253, 254, and 255.

257

System 257-264: Treble and bass staves. Treble staff has a trill (tr) above measure 263. Dynamics: *p* in measure 258, *f* in measures 262 and 263.

265

System 265-270: Treble and bass staves. Dynamics: *p* in measure 266, *f* in measure 270.

271

System 271-275: Treble and bass staves. Dynamics: *f* in measure 271.

276

System 276-284: Treble and bass staves. Treble staff has a trill (tr) above measure 278. Dynamics: *p* in measure 277, *f* in measures 278 and 283.

285

System 285-290: Treble and bass staves. Dynamics: *pp* in measures 285 and 286, *f* in measure 289.

294

300

307

317

326

332

340-8

Fine.

MUSIC FOR GUITAR AND PIANO

From the collection of the Library of Congress



W0019 CALL, Léonard de: *Sonate*, Op 143. Publ: Richault. 14 pages
(5 gtr, 9 pn). ID=Call.Op143.

CORRECTIONS: (bt=beat; c¹=notated middle C.)

Gtr16 bt1: e² was d².

Gtr22: both e were g.

Gtr26: all 3 e were g.

Gtr75 bt1: d¹ was e¹.

Gtr90: both a were c¹.

Gtr95 bt1: a was f.

Gtr162,164 bt4: # added to g².

Gtr169: measure had 4 beats. Bt4 chord was 8th note connected by beam. 8th rest added.

Gtr204 bt4-5: accidentals on g¹ were switched; natural was first, then #.

Gtr292 bt1: g was e.

Gtr303 bt1: a was b.

Pn8 bt1 bass: # moved from e to d.

Pn116 bt1 bass: d was c.

Pn Andantino both cleffs: key signature was A major (3 sharps) throughout.

Pn159,161 bt5 treble: # added to g².

Pn261 bt1 bass: e was c.

Pn297 bt1 treble: # added to g².

COMMENTS:

Beware of unmarked triplets, for example in gtr208.

DEFINITIONS:

Cantabile = singing style.

M.D.C. = Minuetto da capo = repeat minuet from the beginning.

Rondo = form of music in which the principal subject is repeated several times, e.g.,
ABACA.

Trio = middle section of minuet or other composition in ternary form.

LIBRARY OF CONGRESS CALL NUMBER: M277.C (in box labeled "M277 A-").

THANKS: The publisher is indebted to pianist Elmer Booze for his proofreading help.

This "performance facsimile", with restoration, corrections, measure numbers, and other aids to ready performance, was created by Donald Sauter (1997) and is offered freely to the world.